



ΟΜΙΚΡΟΝ
ΣΥΜΒΟΥΛΟΙ ΠΕΡΙΒΑΛΛΟΝΤΟΣ

CONSULTING SERVICES IN

<https://omikron-sa.gr/en/>


- Natural Environment
- Project Management
- Regional development
- Cartography
- Databases and GIS applications



Over **five hundred (500)** projects and studies on :




**Natural Disasters and
Civil Protection**



**Forest Charts and
Forest Law Enforcement**




**Environmental Action
Advisor Projects**



**Natural Terrestrial /
Marine Environment,
Water Resources and
Climate Change**

ISO 9001: 2015

ISO 14001: 2015



Primary Sector

ΟΜΙΚΡΟΝ
ΣΥΜΒΟΥΛΟΙ ΠΕΡΙΒΑΛΛΟΝΤΟΣ

<https://omikron-sa.gr/en/>



Innovative Technology Solutions for public and private sectors as well for farmers.



Ofire+

Innovative crisis management solution for countryside fires, timely response and enhancement of the resilience of important tourism and cultural infrastructures.

[LEARN MORE](#)



Sealoc

Standard System for Providing Marine Features Forecasts and Other Support Services at High Local Resolution

[LEARN MORE](#)



ΔΑΣΙΚΟΣ ΧΑΡΤΗΣ
& ΑΝΑΡΤΗΣΕΙΣ



Forest map services

Services to Individuals and farmers during the period for submission of objections in areas under hanging forest map.

[LEARN MORE](#)

OMIKRON SA Activities in the frame of the BorderGraze Project

Development of cross-border High Nature Value protocols for **identification, classification and environmental evaluation of grazing lands in NATURA 2000 areas.**

Thematic grazing maps for the cross-border NATURA 2000 areas

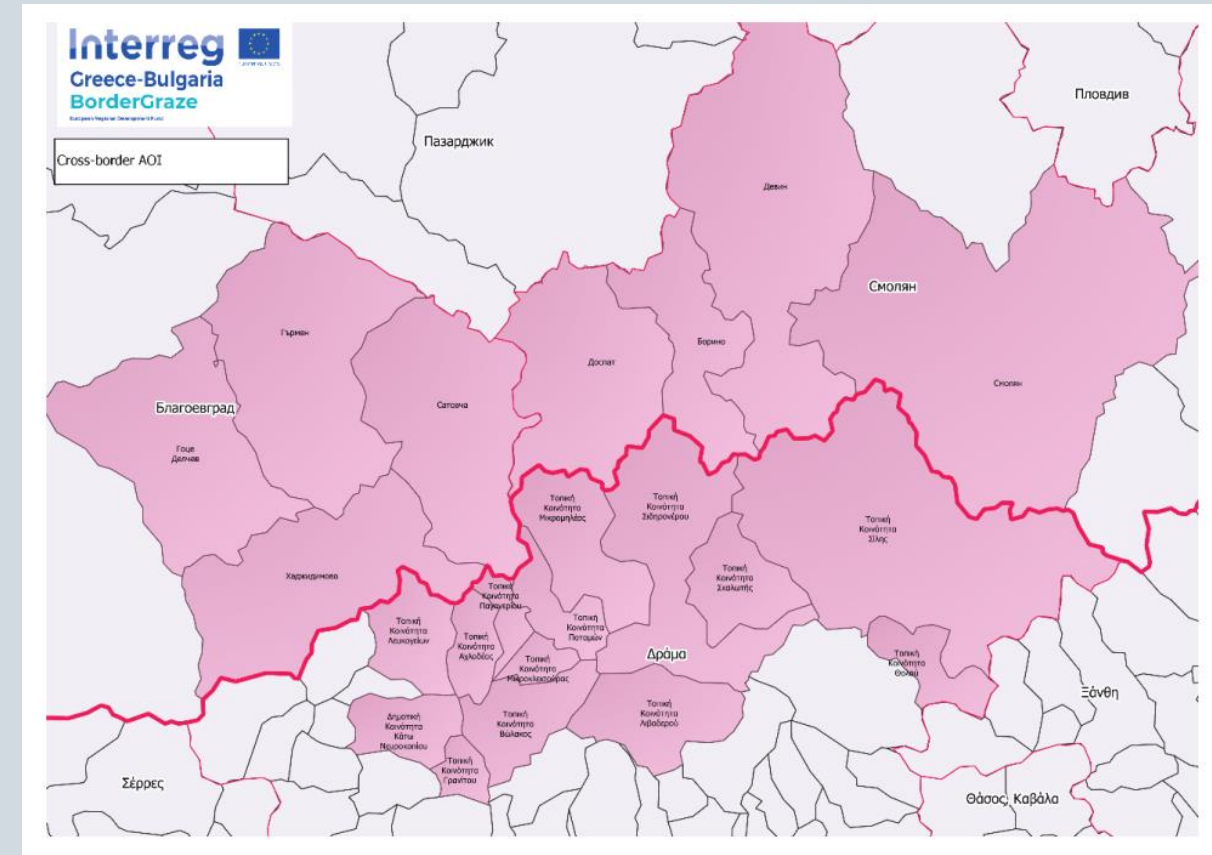
Development of **practical guidelines on High Nature Value grazing**, meat farmers and producers' association building and cross-border commercialization strategies

Development of an analytic cross-border **business methodology for the exploitation of the High Nature Value products' market potential.**

Development and dissemination of cross-border **digital marketplace** for direct selling and distribution of High Nature Value meat products

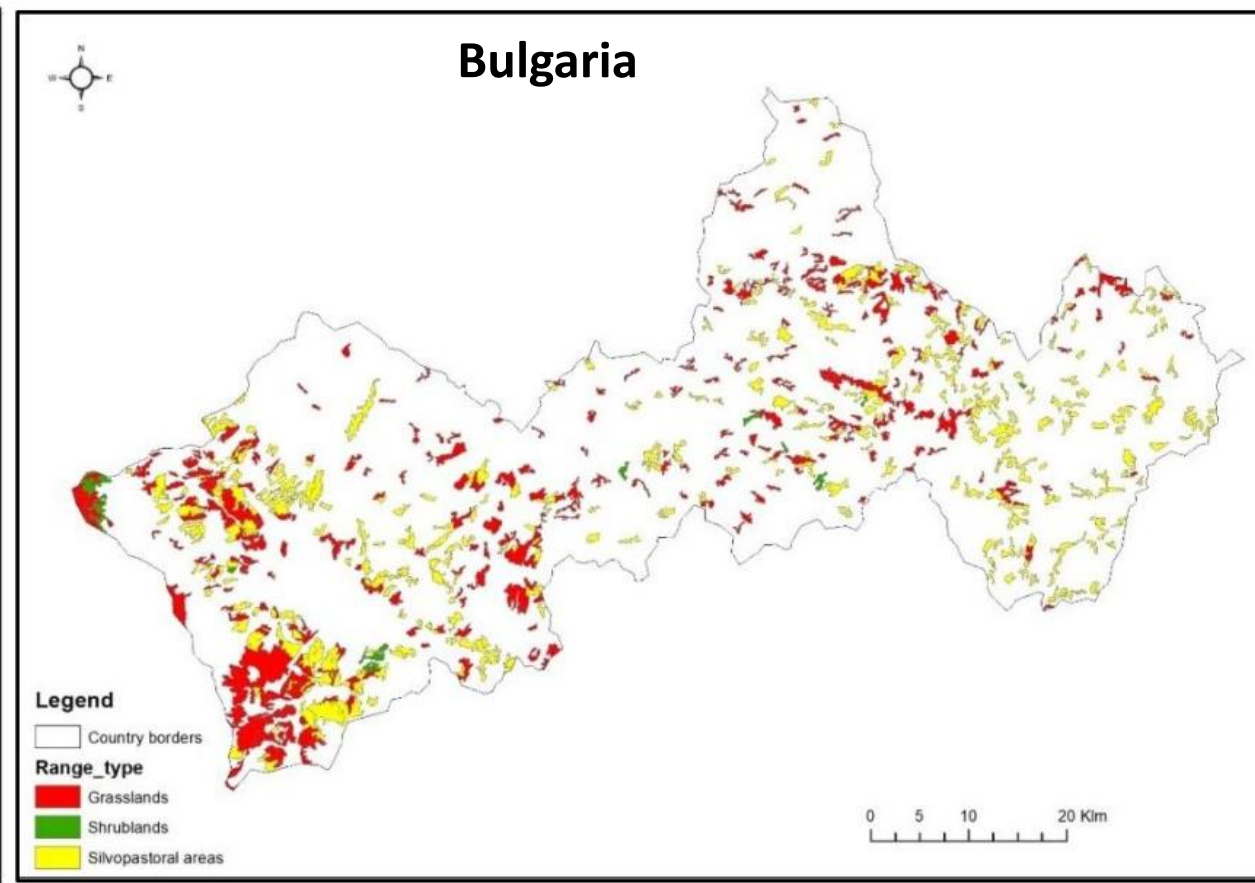
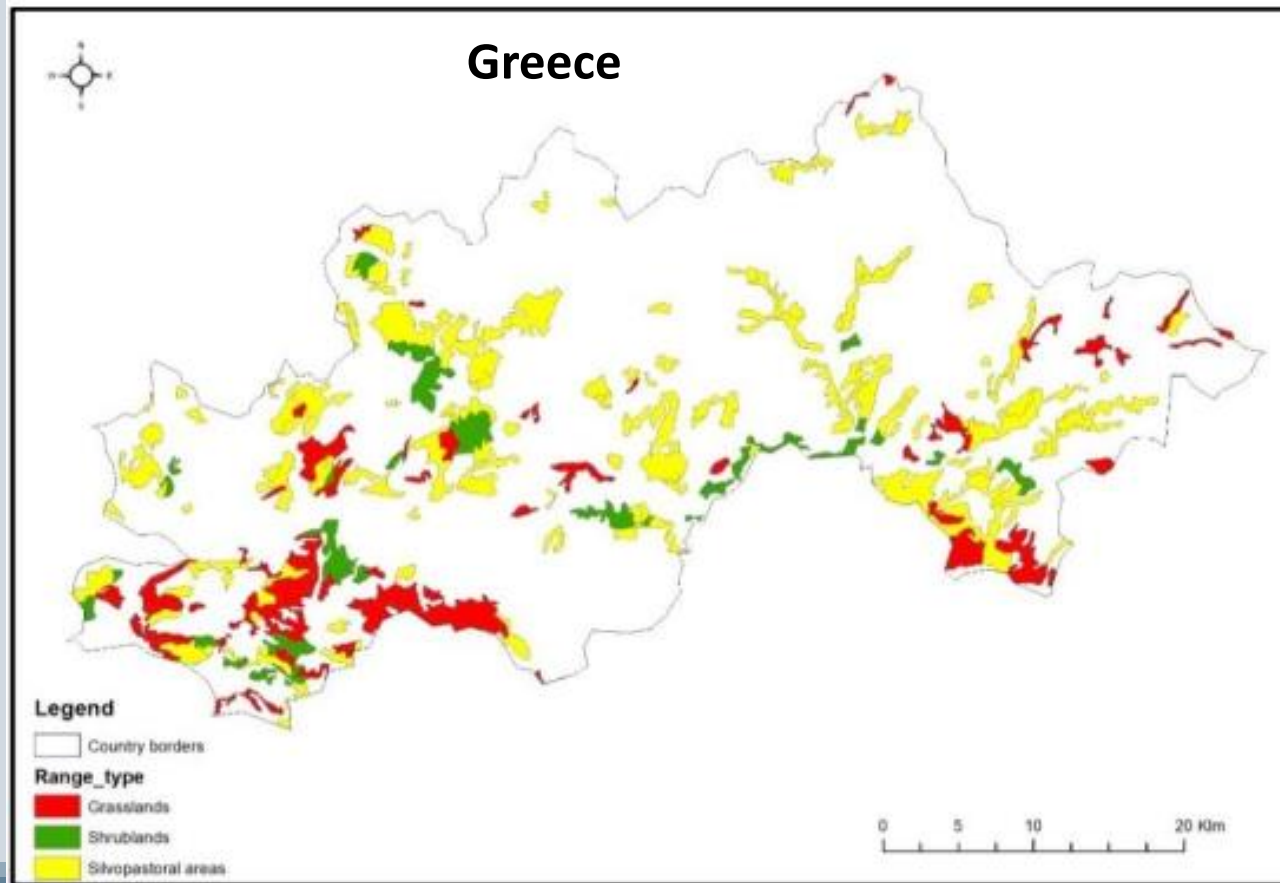
Study area of the BorderGraze Project

Country	Municipality (GR)/District (BG)	Communities (GR)/Municipalities (BG)
GR	Nevrokopi	Lefkogeia, Kato Nevrokopi, Achladea, Granitis, Pagoneri, Mikrokleisoura, Potamon, Mikromilea, Volakas
GR	Drama	Sidironeri, Livadero, Skaloti
GR	Paranesti	Sili, Tholos
BG	Blagoevgrad	Satovcha, Garmen, Gotche Delchev, Hadzhidimovo
BG	Smolyan	Dospat, Borino, Devin, Smolyan



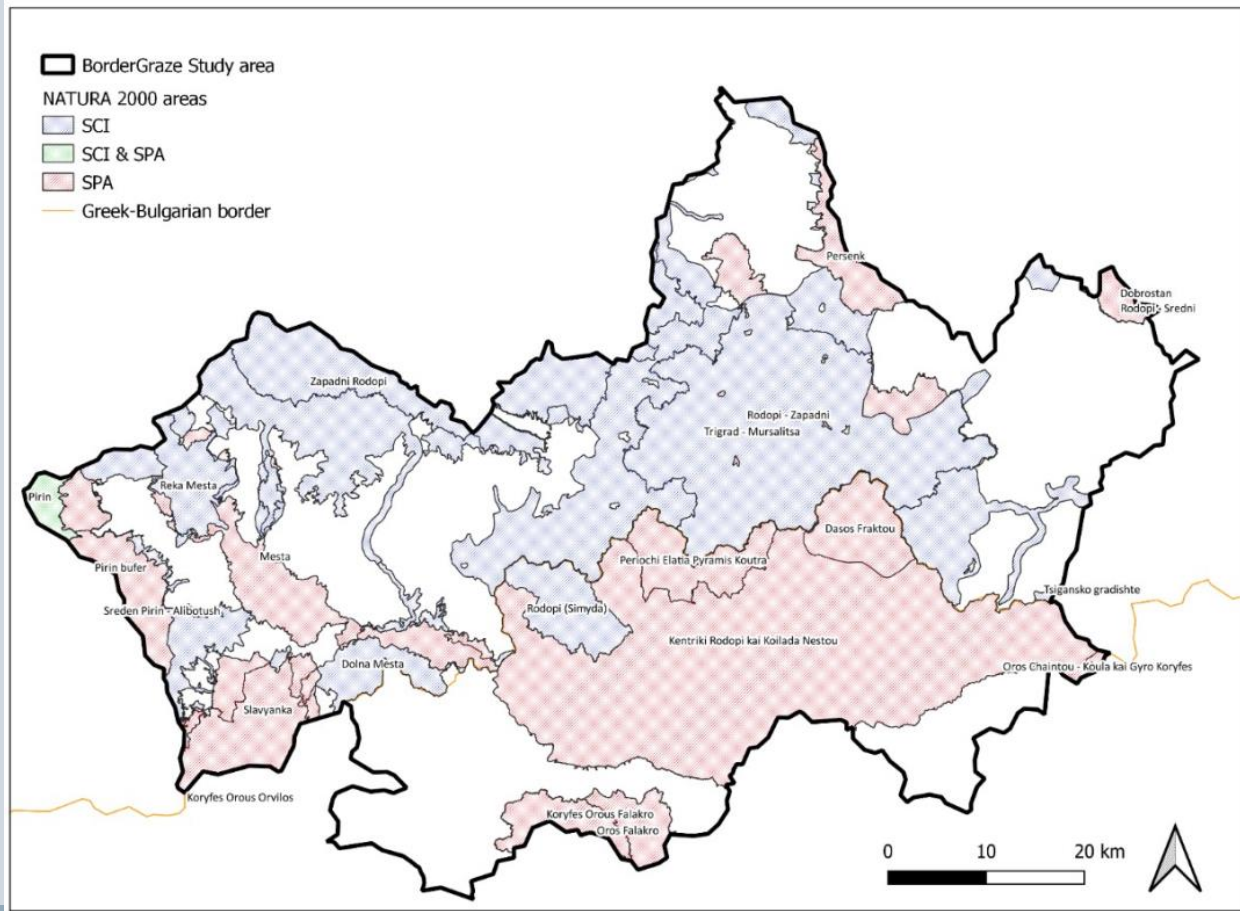
Identification and mapping of grazing lands

3 types of grazing lands: grasslands, shrublands, and silvopastoral areas

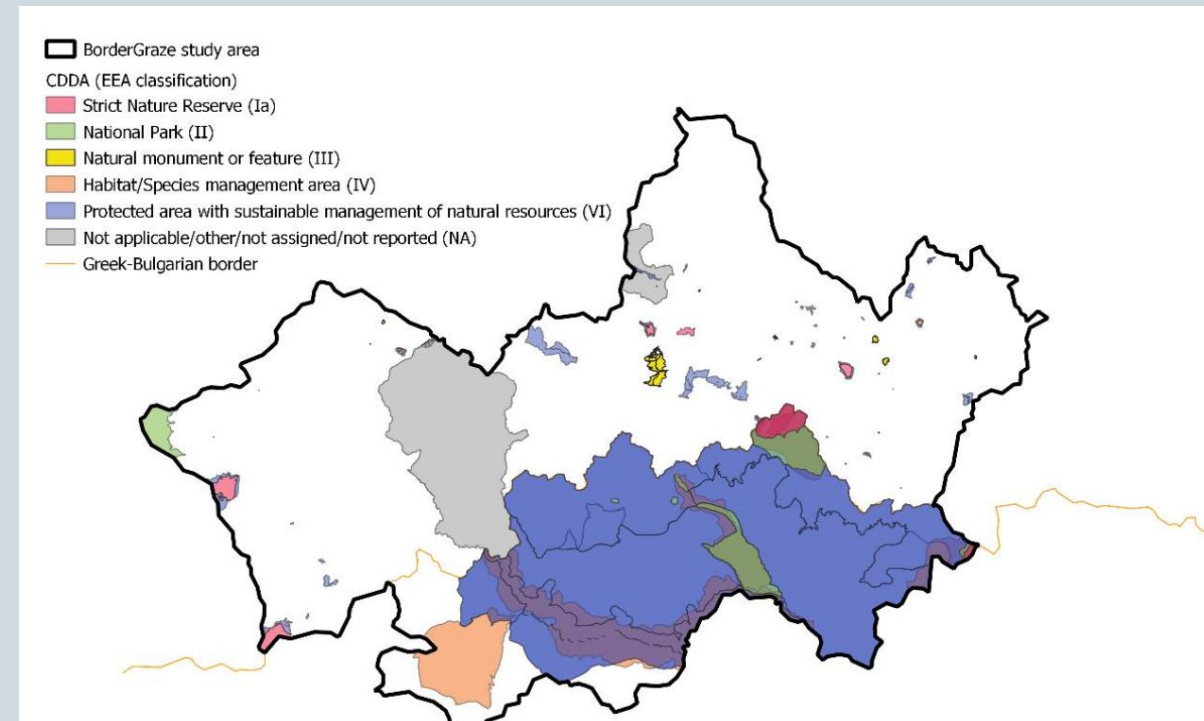


Identification and mapping of protected areas

NATURA 2000 areas



Nationally designated protected areas

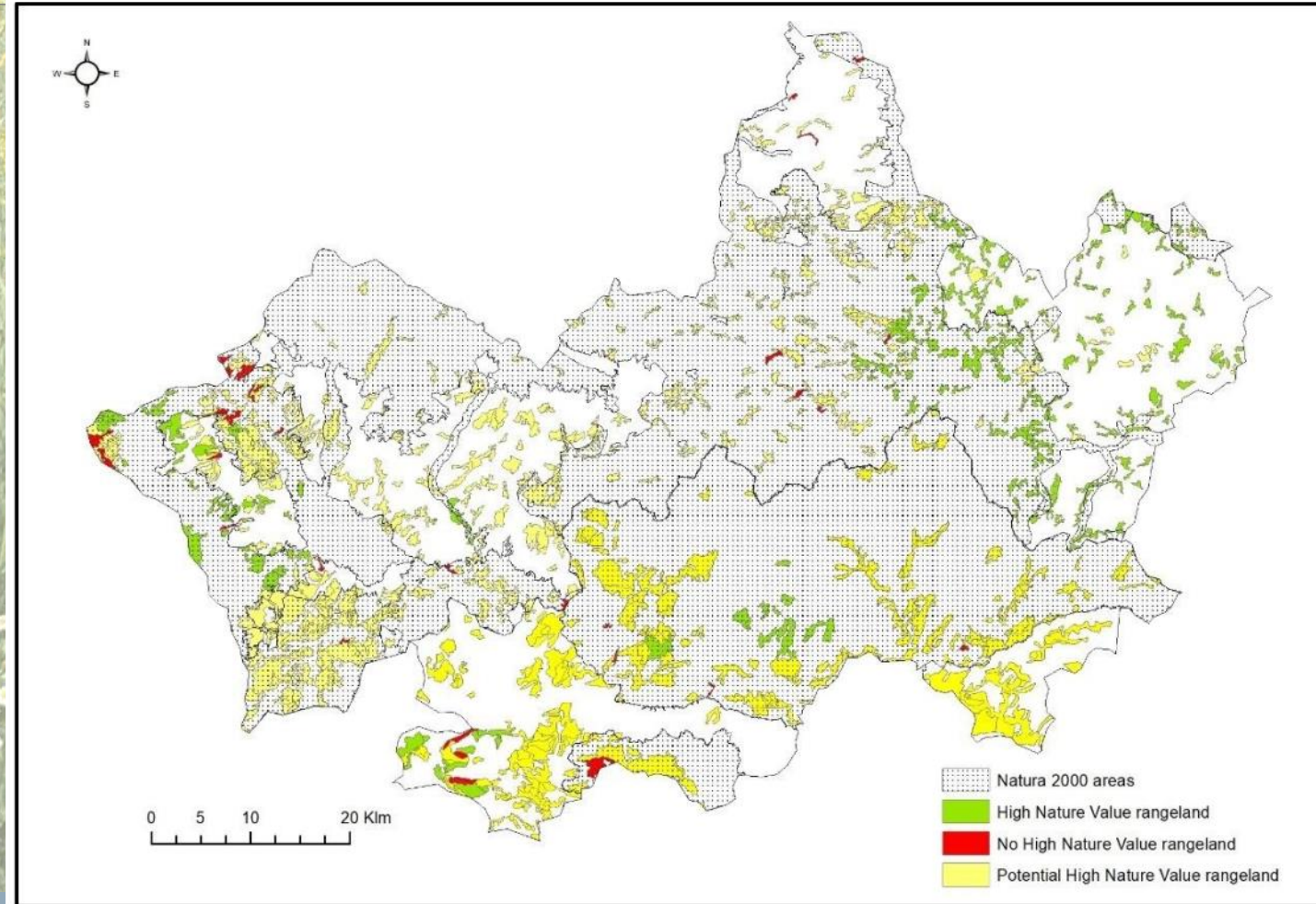


Identification and mapping of HNV areas

High Nature Value areas

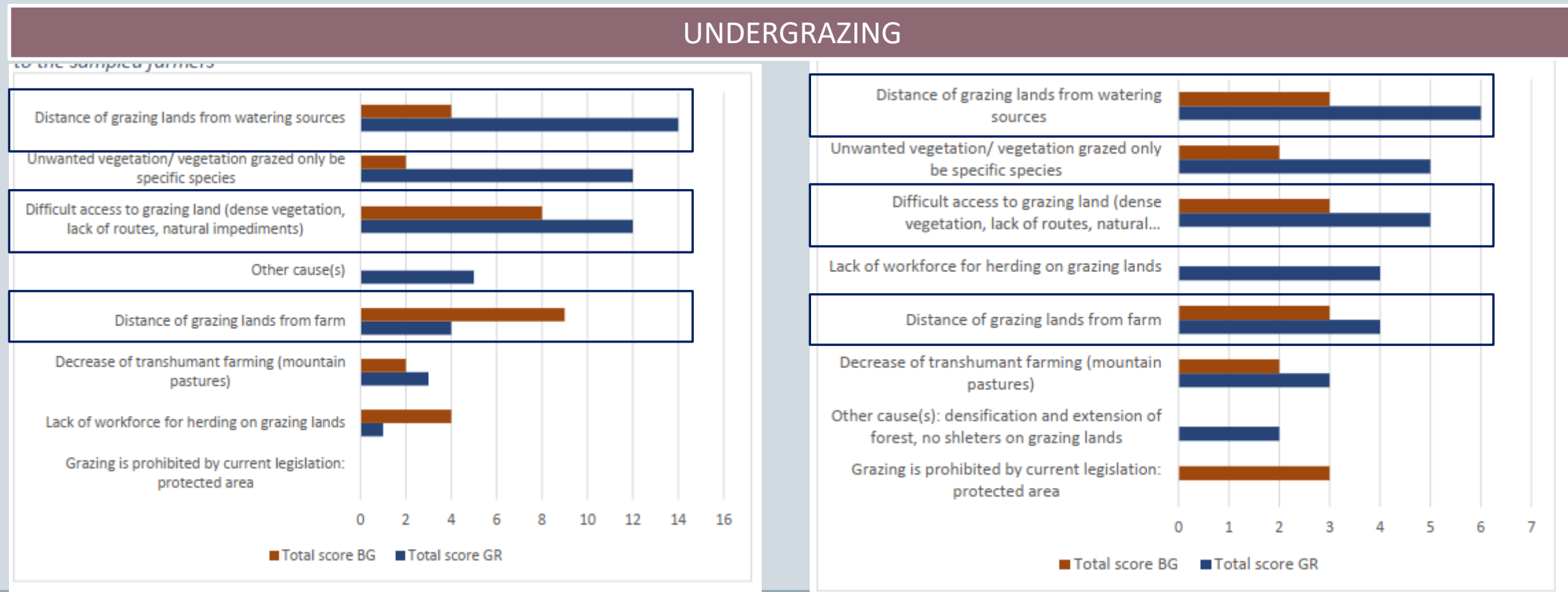
« *Those areas in Europe where [...] agriculture supports or is associated with either a high species and habitat diversity [...]* »
(Andersen et al, 2004)

OMIKRON methodology combines **biodiversity, site quality and grazing pressure indicators** to identify HNV grazing lands



Surveys to farmers and farmers' cooperatives : problems linked with grazing lands

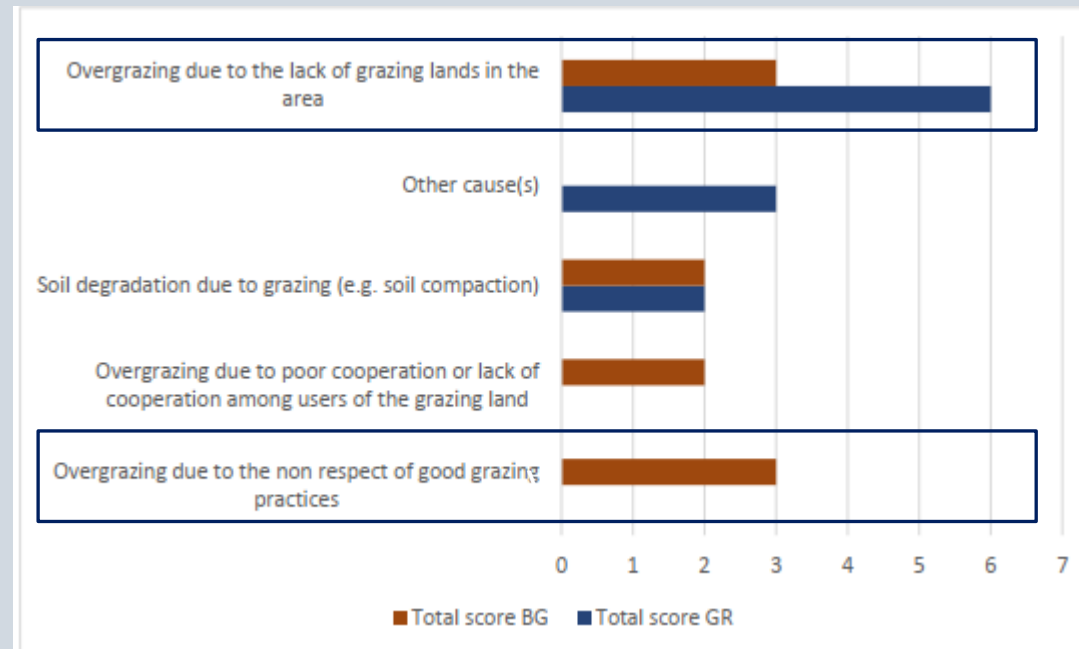
21 farmers interviewed and 3 farmers' cooperatives/producers groups



Surveys to farmers and farmers' cooperatives : problems linked with grazing lands

21 farmers interviewed and 3 farmers' cooperatives/producers groups

OVERGRAZING



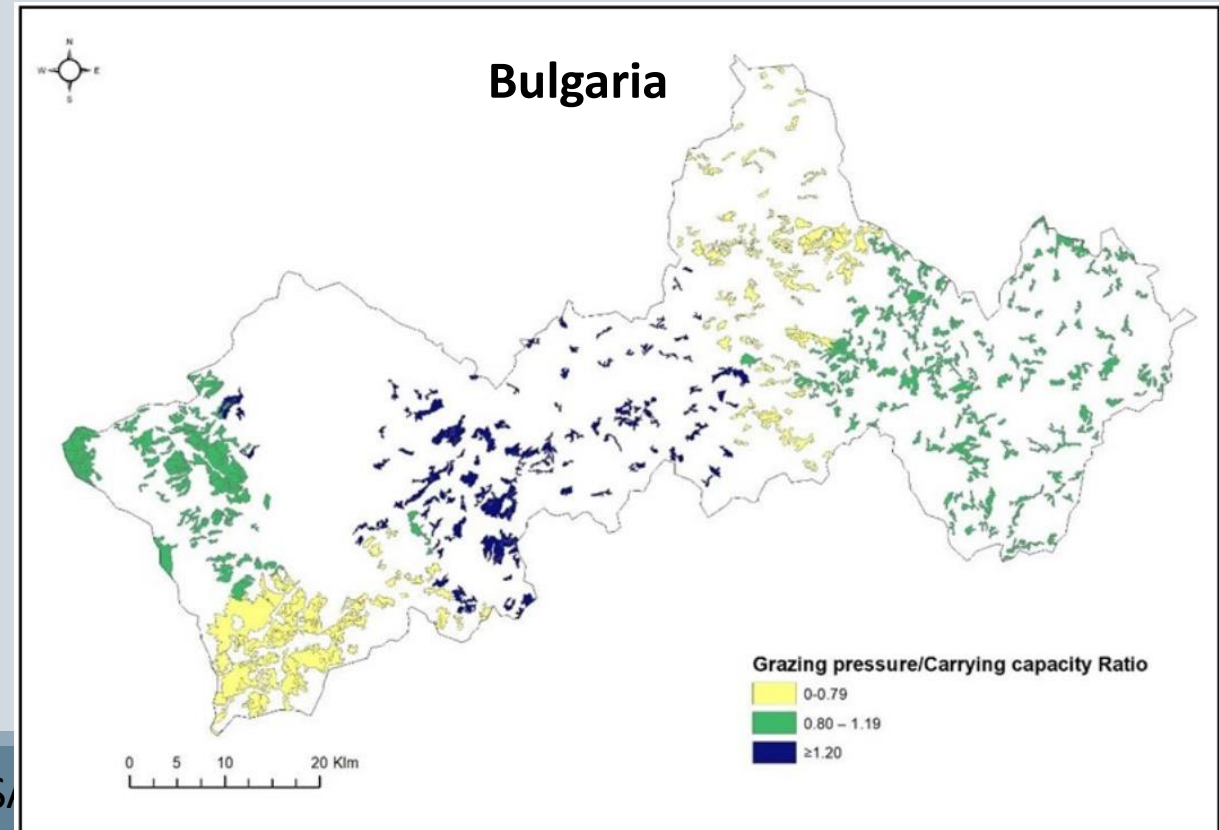
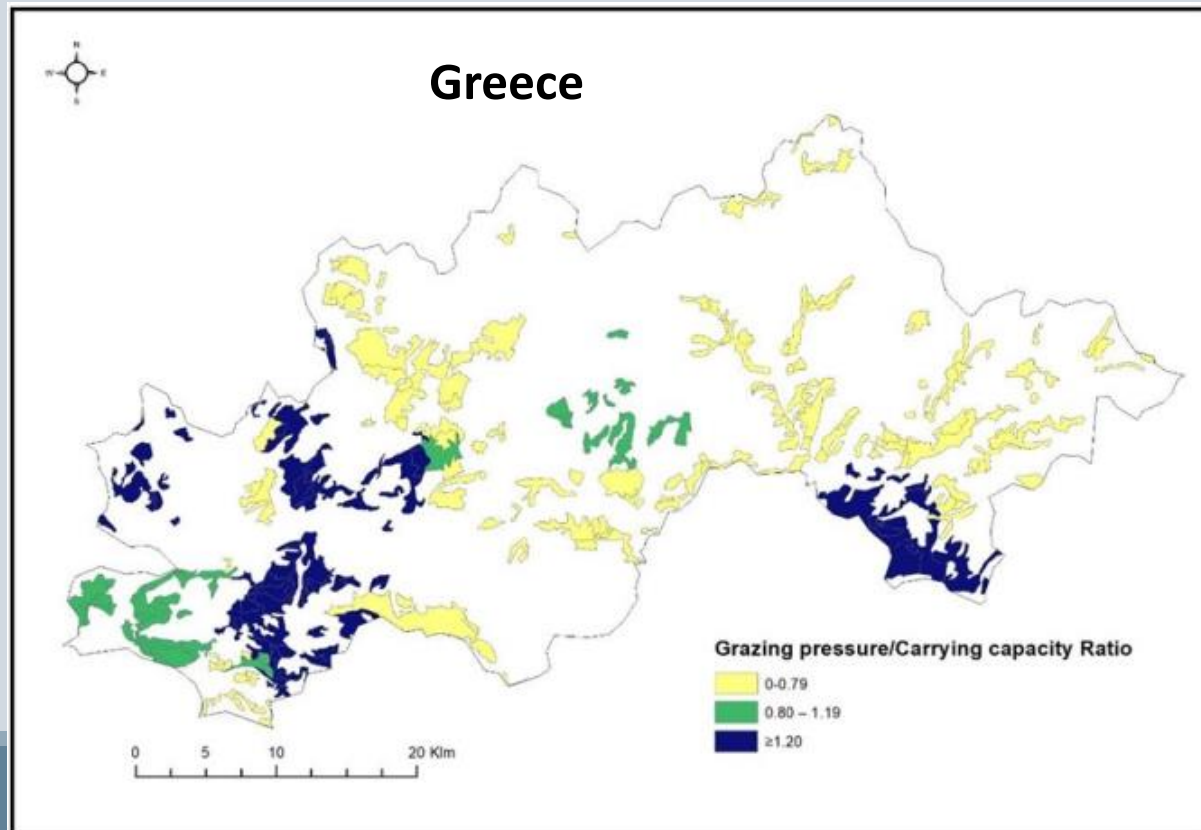
Identification and mapping of threats

Use of national databases and grazing lands cartography to identify threats on grazing lands:

UNDERGRAZING

OVERGRAZING

But also : shrub encroachment, erosion risk....



Proposition of practical measures for a proper grazing lands management

- Based on **scientific expertise**
- Designed according to the **specific threats identified** on grazing lands and **conservation/restauration goals**
- **Spatially defined**, for every grazing land unit
- **First estimation of costs and feasibility**, to be further discussed with local stake-holders

- Grazing management plan (including the adaptation of stocking rate according to grazing capacity)
- Works to avoid water runoff and soil erosion
- Fencing
- Herbaceous plant seeding
- Shrub thinning
- Mechanic shrub destruction
- Prescribed burning
- Introduction of goats and replacing grazing animals with goats
- Establishment and spatial distribution of watering points

Monitoring of grazing land condition

Based on **scientific expertise**

- Specific **indicators of grazing lands condition**
- **Detailed monitoring protocol and evaluation timeframe** for each indicator
- Possibility to simplify the monitoring of some indicators through the use of **remote-sensing techniques**



Source: Vrachnakis et al, 2007

The proposed business solution

Commercialisation and promotion of meat products originating from

Livestock holdings located in areas NATURA 2000 of the Greek – Bulgarian cross-border area

Animals grazing on semi-natural high nature value (HNV) grazing lands under proper grazing management

- **Conservation and/or improvement of the environmental status** of grazing land located in protected areas
- Empowerment of livestock producers with **certified practices, through clustering and networking**
- Commercialization of HNV meat products through digital marketplace as **differentiated meat products of high added value**

For Individual producers

- Efficient feeding: minimizing costs through sustainable use of grazing lands
- Differentiated price of high added-value meat products

Agricultural cooperatives

- Maintain or increase an active community of meat producers in mountainous or other less-favoured regions

Meat manufacturers

- Differentiated products in the current market
- Entrance to new markets

Management bodies of protected areas

- Protection of the environment and the biodiversity in HNV, protected or environmentally sensitive areas

The tools

Certified HNV grazing practices


- Solid scientific based protocols for HNV grazing
- Action plan for their implementation and monitoring
- Certification and control authority

Marketing Research and Promotion Strategy


- Pricing
- Brand positioning
- Promotion

Digital market place for online direct sales

The digital Market place



Interreg 
Greece-Bulgaria
BorderGraz
European Regional Development Fund

Home Cart Checkout Dashboard My account My Orders Shop

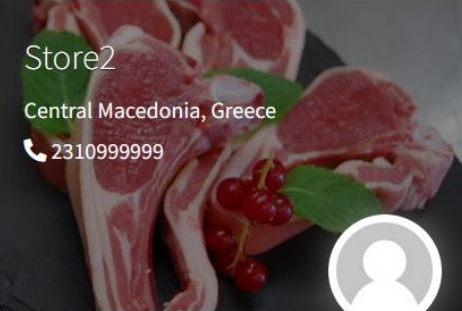

€0 0 items 


Store List

Total stores showing: 2

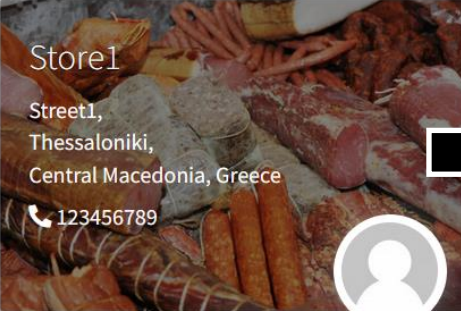

 Filter Sort by: 


Store2
Central Macedonia, Greece
☎ 2310999999






Store1
Street1,
Thessaloniki,
Central Macedonia, Greece
☎ 123456789








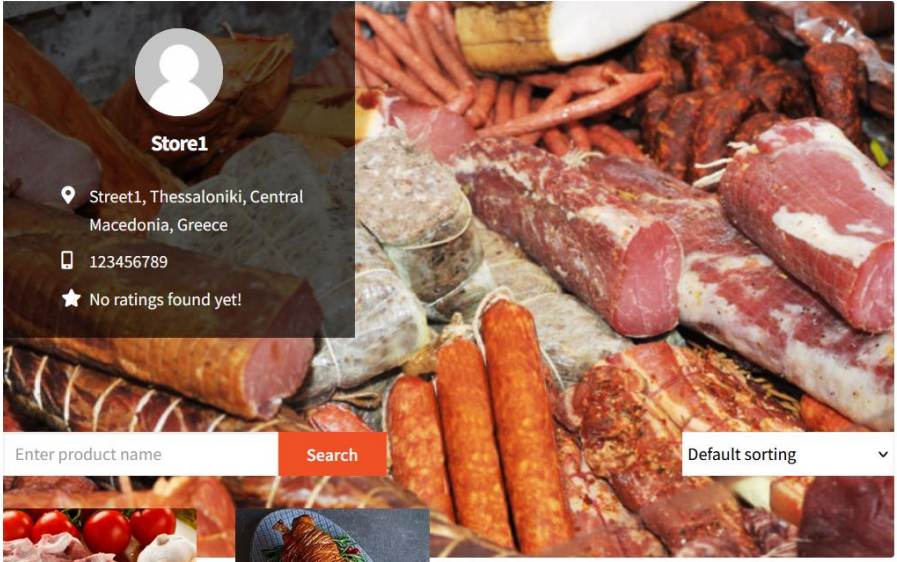
Store1



📍 Street1, Thessaloniki, Central Macedonia, Greece

☎ 123456789

★ No ratings found yet!

Enter product name Default sorting 



Product1 €10 Product2 €15

Thank you for your attention !

Visit our website : <https://bordergraze.com/>